

Kozy Kollar Exhaust Hood EV-4

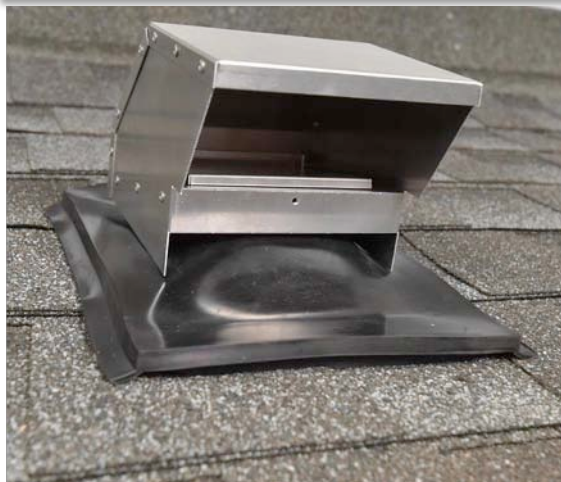
You Can Now Safely Install A Bathroom Exhaust From Inside The Building.
A simple solution to prevent mold caused by improper bathroom vent installations.



Same Easy Kozy Kollar Installation



- Aluminum and EPDM materials used for exterior surfaces.
- Accepts a 4" Exhaust Hose.
- 18 sq. in. outlet for dryer vent.
- Integral Damper.
- 14.4 sq. in. outlet for fan exhaust
- Will work on any roof angle.



When used as a Dryer Vent the ¼' screen **MUST** be removed. An inline lint filter and regular service are highly recommended.

The EV-4 also requires **COMPRESSION** to work. The rod couplings must be tightened to 3 ft. lbs. If a Torque Wrench is not available look for a slight distortion at the center of the Lower Mounting Frame.